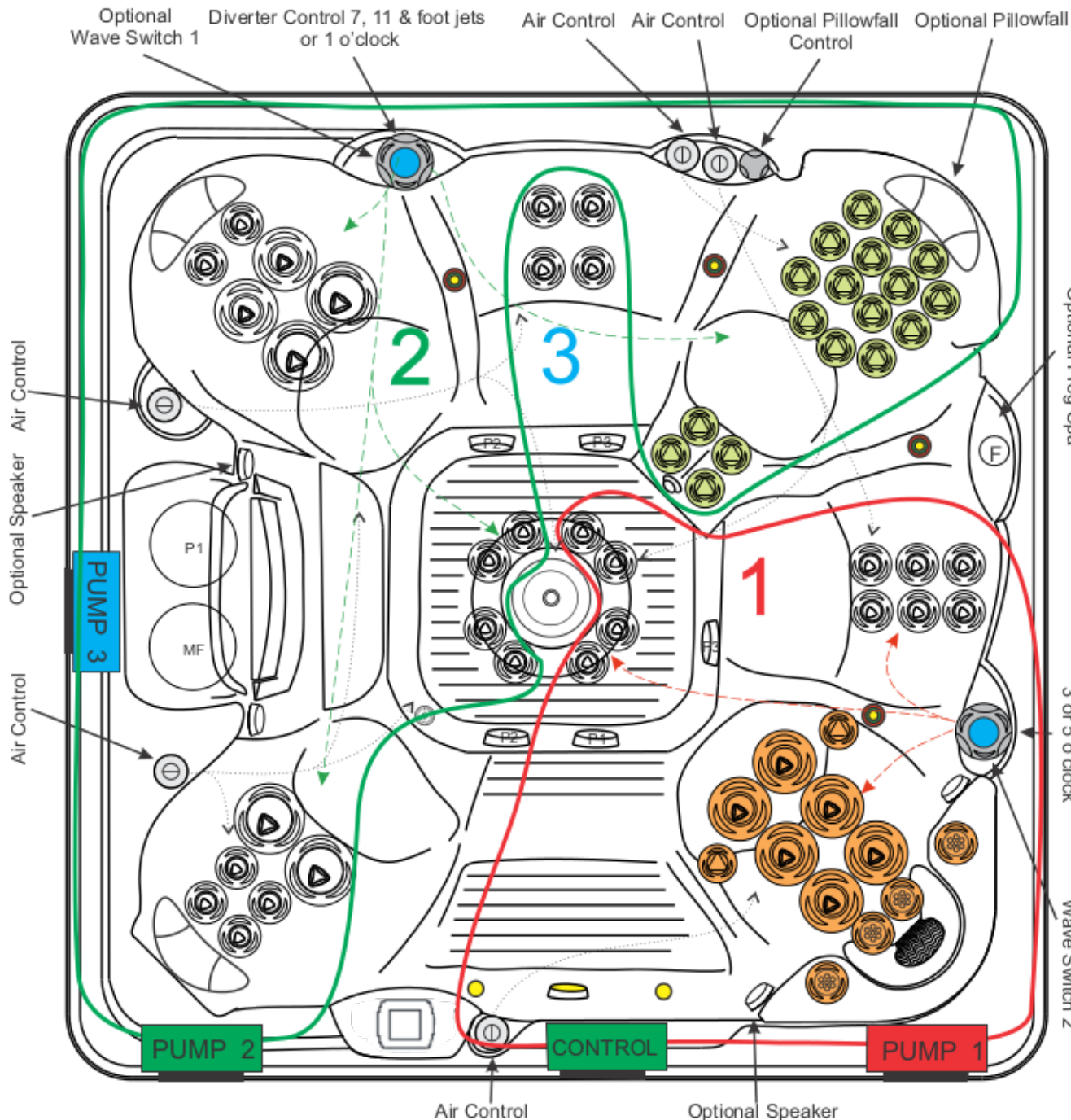


## 2016 GRAND CAYMAN 62 JET - 3 Pump (Frog Option)








DIMENSIONS 91 in. x 91 in. x 36 in. (231 cm x 231 cm x 91 cm)	
TOPSIDE	TP800 (33-1314-08)
CONTROL	MBP20VLV
PUMP 1	6.0 BHP (3.0 HP-50 Hz) 1SPD
PUMP 2	6.0 BHP (3.0 HP-50 Hz) 1SPD
PUMP 3	3.0 BHP (1.0 HP-50 Hz) 1SPD
HEATER	5.5 (3.0-50Hz) kW
SS JETS	STANDARD
SPALIGHT	12 V (3.5 in.)
FULL FOAM W/ABS BOTTOM	STANDARD
CIRCULATION & MICROFILTER	STANDARD
OZONE/PROPURE/AOP	OPTIONAL
STEREO	OPTIONAL
DYNASTAR/DYNAPOINT/DYNABRITE	OPTIONAL
TRANQUILITY FALL	OPTIONAL
KINGWOOD CABINET	OPTIONAL
FROG SYSTEM	OPTIONAL
PILLOWFALL OPTION	1:00 O'CLOCK
PULSATING WAVE OPTION	1:00, 5:00 O'CLOCK



Optional Frog Spa

Diverter Control 3 or 5 o'clock

Optional Wave Switch 2

03-3601-52 WHIRLPOOL 5 in., SS		1
03-3501-52 C-HELIX ROTO 5 in., SS		4
03-3401-52 C-HELIX ROTO 4.5 in., SS		8
03-3307-52 C-HELIX MULTI-MASSAGE 3 in., SS		4
03-3304-52 C-HELIX DIRECT 3 in., SS		8
03-3301-52 C-HELIX ROTO 3 in., SS		16
03-3201-52 C-HELIX 2.75 in., SS		20
05-0012-48 OZONE / DRAIN JET		1
<b>TOTAL JETS</b>		<b>62</b>