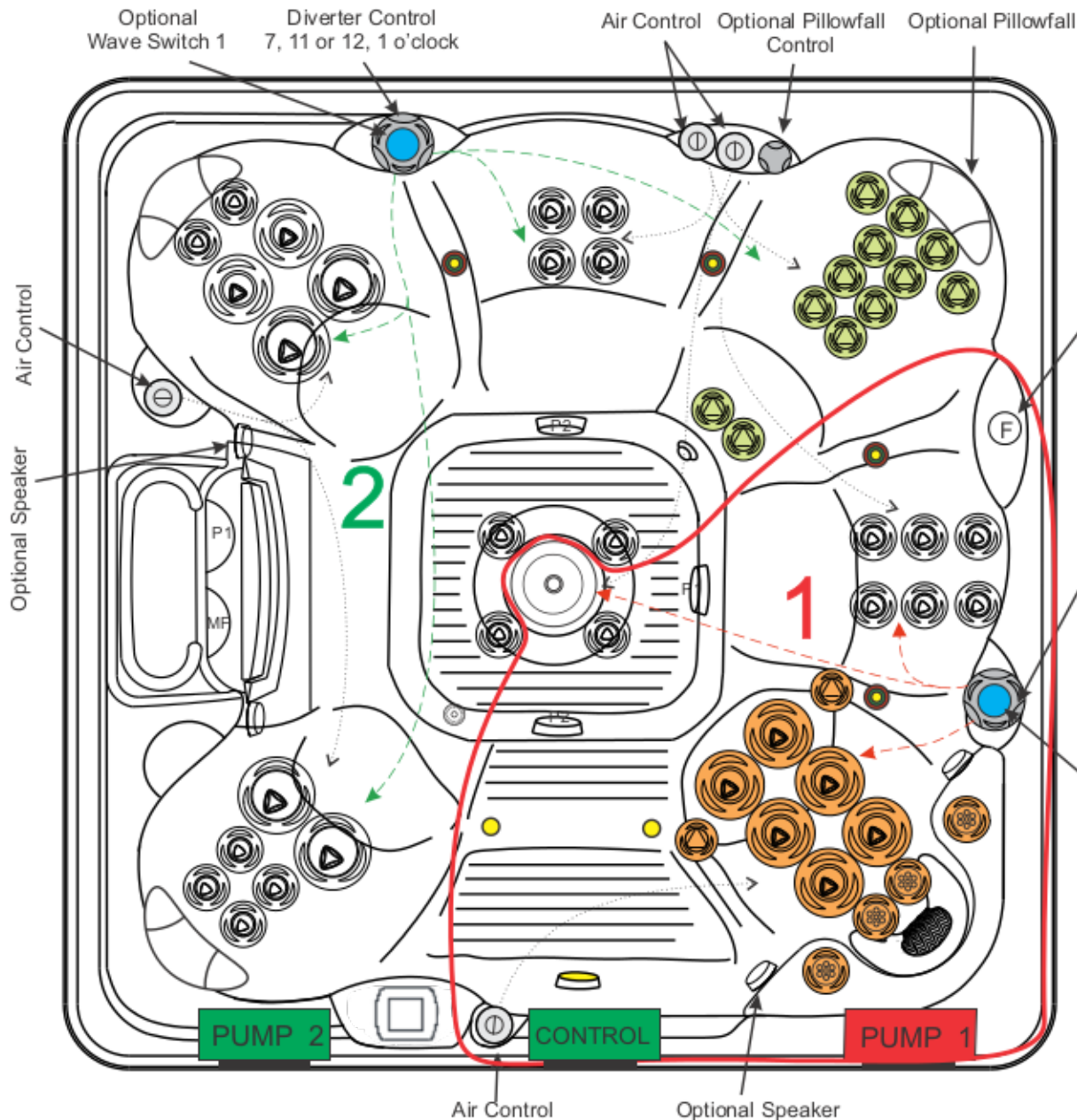










## 2016 CAPTIVA 52 JET - 2 PUMP (Frog Option)

DIMENSIONS	84 in. x 84 in. x 36 in. (213 cm x 213 cm x 91 cm)
TOPSIDE	TP800 (33-1314-08)
CONTROL	MBP501
PUMP 1	6.0 BHP (3.0 HP-50 Hz) 1SPD
PUMP 2	6.0 BHP (3.0 HP-50 Hz) 1SPD
HEATER	5.5 (3.0-50 Hz) KW
SS JETS	STANDARD
SPALIGHT	12 V (3.5 in.)
FULL FOAM W/ABS BOTTOM	STANDARD
CIRCULATION & MICROFILTER	STANDARD
OZONE/PROPURE/AOP	OPTIONAL
STEREO	OPTIONAL
DYNASTAR/DYNAPOINT/DYNABRITE	OPTIONAL
TRANQUILITY FALL	OPTIONAL
KINGWOOD CABINET	OPTIONAL
FROG SYSTEM	OPTIONAL
PILLOWFALL OPTION	1:00 O'CLOCK
PULSATING WAVE OPTION	1:00, 5:00 O'CLOCK



Optional Frog Spa	03-3601-52 WHIRLPOOL 5 in., SS		1
Diverter Control Whirlpool & 3 or 5 o'clock	03-3501-52 C-HELIX ROTO 5 in., SS		4
	03-3401-52 C-HELIX ROTO 4.5 in., SS		8
	03-3307-52 C-HELIX MULTI-MASSAGE 3 in., SS		4
Optional Wave Switch 1	03-3304-52 C-HELIX DIRECT 3 in., SS		6
	03-3301-52 C-HELIX ROTO 3 in., SS		14
	03-3201-52 C-HELIX 2.75 in., SS		14
	05-0012-48 OZONE / DRAIN JET		1
<b>TOTAL JETS</b>			<b>52</b>