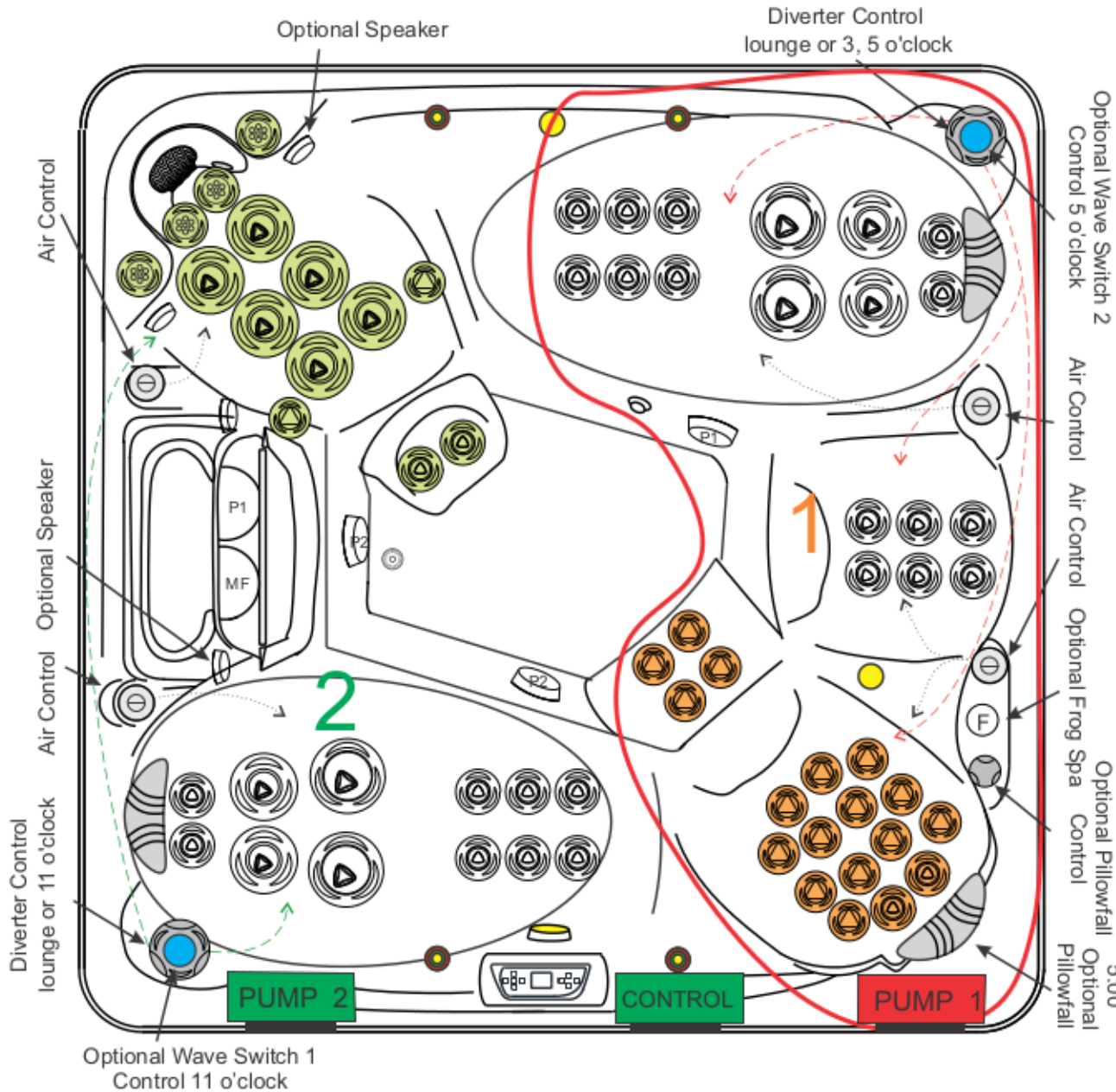


2016 BARBADOS 63 JET - 2 Pump

DIMENSIONS	91 in. x 91 in. x 36 in. (231 cm x 231 cm x 91 cm)	
TOPSIDE	TP800 (33-1314-08)	
CONTROL	MBP501	
PUMP 1	6.0 BHP (3.0 HP-50 Hz)	1SPD 230 V
PUMP 2	6.0 BHP (3.0 HP-50 Hz)	1SPD 230 V
HEATER	5.5 (3.0-50 Hz) kW	
SS JETS	STANDARD	
SPALIGHT	12 V (3.5 in.)	
FULL FOAM W/ABS BOTTOM	STANDARD	
CIRCULATION & MICROFILTER	STANDARD	
OZONE/PROPURE/AOP	OPTIONAL	
STEREO	OPTIONAL	
DYNASTAR/DYNAPOINT/DYNABRITE	OPTIONAL	
TRANQUILITY FALL	OPTIONAL	
KINGWOOD CABINET	OPTIONAL	
FROG SYSTEM	OPTIONAL	
PILLOWFALL OPTION	5:00 O'CLOCK	
PULSATING WAVE OPTION	11 & 5:00 O'CLOCK	



03-3501-52	C-HELIX ROTO 5 in., SS	4
03-3401-52	C-HELIX ROTO 4.5 in., SS	10
03-3307-52	C-HELIX MULTI-MASSAGE 3 in., SS	4
03-3304-52	C-HELIX DIRECT 3 in., SS	20
03-3301-52	C-HELIX ROTO 3 in., SS	6
03-3201-52	C-HELIX 2.75 in., SS	18
05-0012-48	OZONE/UV/DRAIN JET	1
TOTAL JETS		63