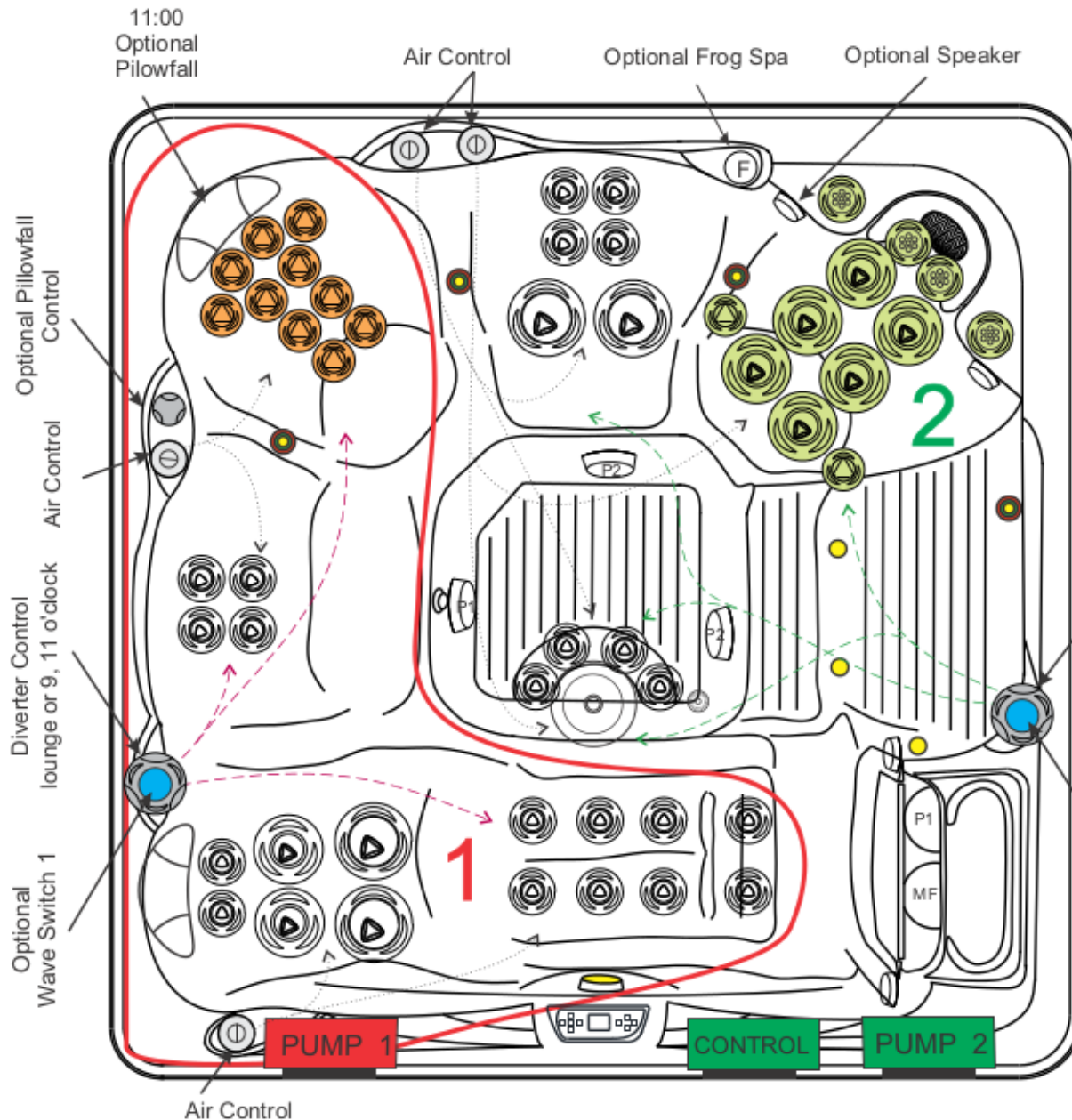


## 2016 ANTIGUA 52 JET - 2 Pump (Frog Option)



|                                                               |                             |
|---------------------------------------------------------------|-----------------------------|
| DIMENSIONS 84 in. x 84 in. x 36 in. (213 cm x 213 cm x 91 cm) |                             |
| TOPSIDE                                                       | TP800 (33-1314-08)          |
| CONTROL                                                       | MBP501                      |
| PUMP 1                                                        | 6.0 BHP (3.0 HP-50 Hz) 1SPD |
| PUMP 2                                                        | 6.0 BHP (3.0 HP-50 Hz) 1SPD |
| HEATER                                                        | 5.5 (3.0-50 Hz) kW          |
| SS JETS                                                       | STANDARD                    |
| SPALIGHT                                                      | 12 V (3.5 in.)              |
| FULL FOAM W/ABS BOTTOM                                        | STANDARD                    |
| CIRCULATION & MICROFILTER                                     | STANDARD                    |
| OZONE/PROPURE/AOP                                             | OPTIONAL                    |
| STEREO                                                        | OPTIONAL                    |
| DYNASTAR/DYNAPOINT/DYNABRITE                                  | OPTIONAL                    |
| TRANQUILITY FALL                                              | OPTIONAL                    |
| KINGWOOD CABINET                                              | OPTIONAL                    |
| FROG SYSTEM                                                   | OPTIONAL                    |
| PILLOWFALL OPTION                                             | 11:00 O'CLOCK               |
| PULSATING WAVE OPTION                                         | 11:00, 1:00 O'CLOCK         |

|            |                                 |    |
|------------|---------------------------------|----|
| 03-3601-52 | WHIRLPOOL 5 in. SS              | 1  |
| 03-3501-52 | C-HELIX ROTO 5 in., SS          | 4  |
| 03-3401-52 | C-HELIX ROTO 4.5 in., SS        | 8  |
| 03-3307-52 | C-HELIX MULTI-MASSAGE 3 in., SS | 4  |
| 03-3304-52 | C-HELIX DIRECT 3 in., SS        | 14 |
| 03-3301-52 | C-HELIX ROTO 3 in., SS          | 8  |
| 03-3201-52 | C-HELIX 2.75 in., SS            | 12 |
| 05-0012-48 | OZONE / DRAIN JET               | 1  |
| TOTAL JETS |                                 | 52 |