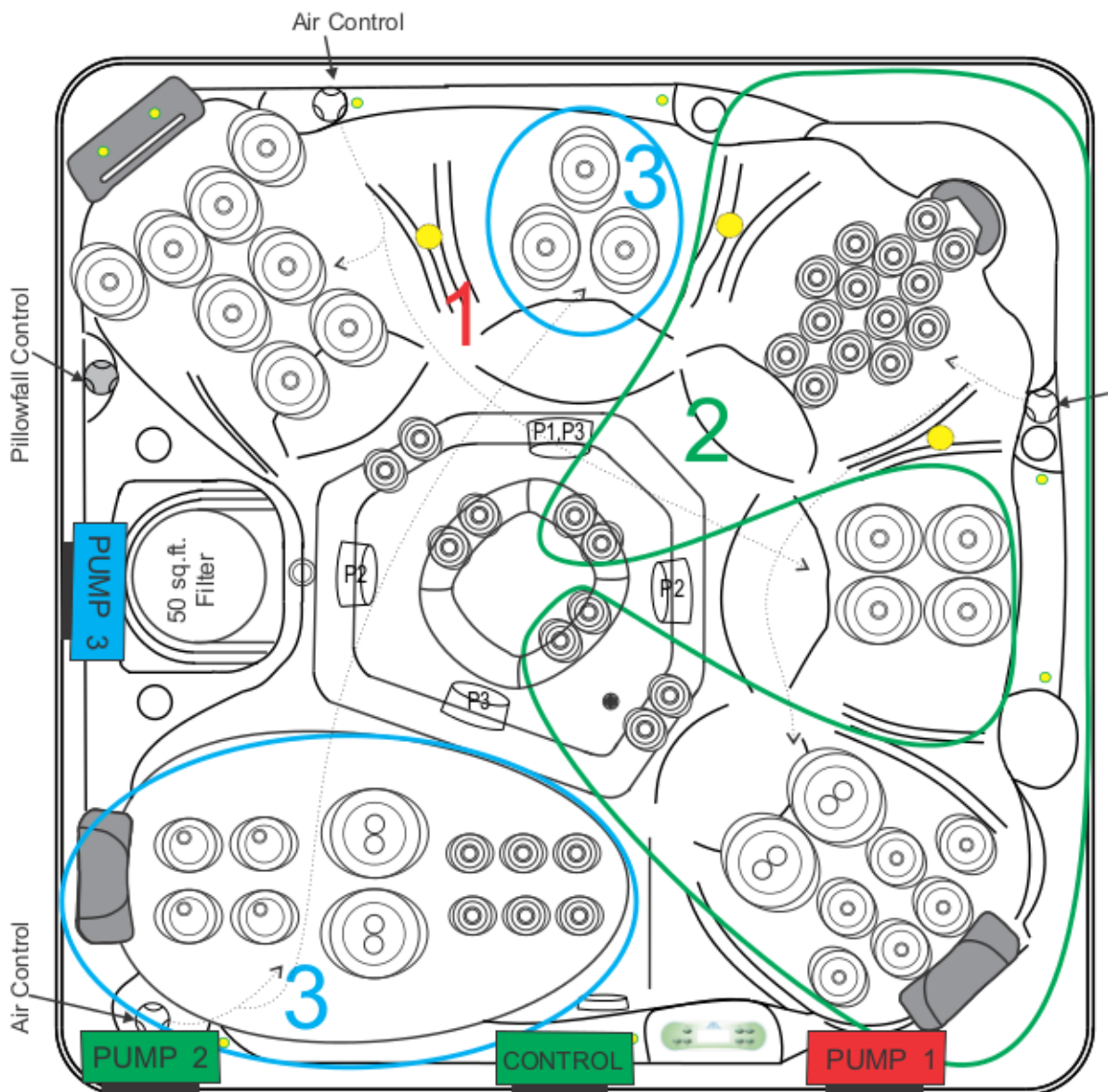











2016 860L Dx 60 JET - 3 Pump



DIMENSIONS	91 in. x 91 in. x 36 in. (231 cm x 231 cm x 91 cm)
TOPSIDE	VL700 (33-0653-08)
CONTROL	MVS504SZ
PUMP 1	4.8 BHP (2.0 HP-50 Hz) 2SPD
PUMP 2	5.0 BHP (3.0 HP-50 Hz) 1SPD
PUMP 3	3.0 BHP (1.0 HP-50 Hz) 1SPD
HEATER	5.5 (3.0-50 Hz) kW
SS JETS	STANDARD
SPALIGHT	12 V (3.5 in.)
DYNASTAR LED	STANDARD
KINGWOOD CABINET	STANDARD
ARCTICPAC	STANDARD
PILLOWFALL	STANDARD 11:00 O'CLOCK
OZONE/AOP	OPTIONAL
STEREO	OPTIONAL
RAIL LIGHTING	OPTIONAL

03-1414-52		4
DOUBLE ROTO 5 in., SS		
03-1312-52		15
DIRECT 3.5 in., SS		
03-1208-52		6
DIRECT 3 in., SS		
03-1207-52		4
ROTO 3 in., SS		
03-1103-52		30
DIRECT 2 in., SS		
03-0023-03		1
OZONE RETURN JET		
TOTAL JETS		60
05-0005-48		1
DRAIN		

REVISION : 24 AUG 16