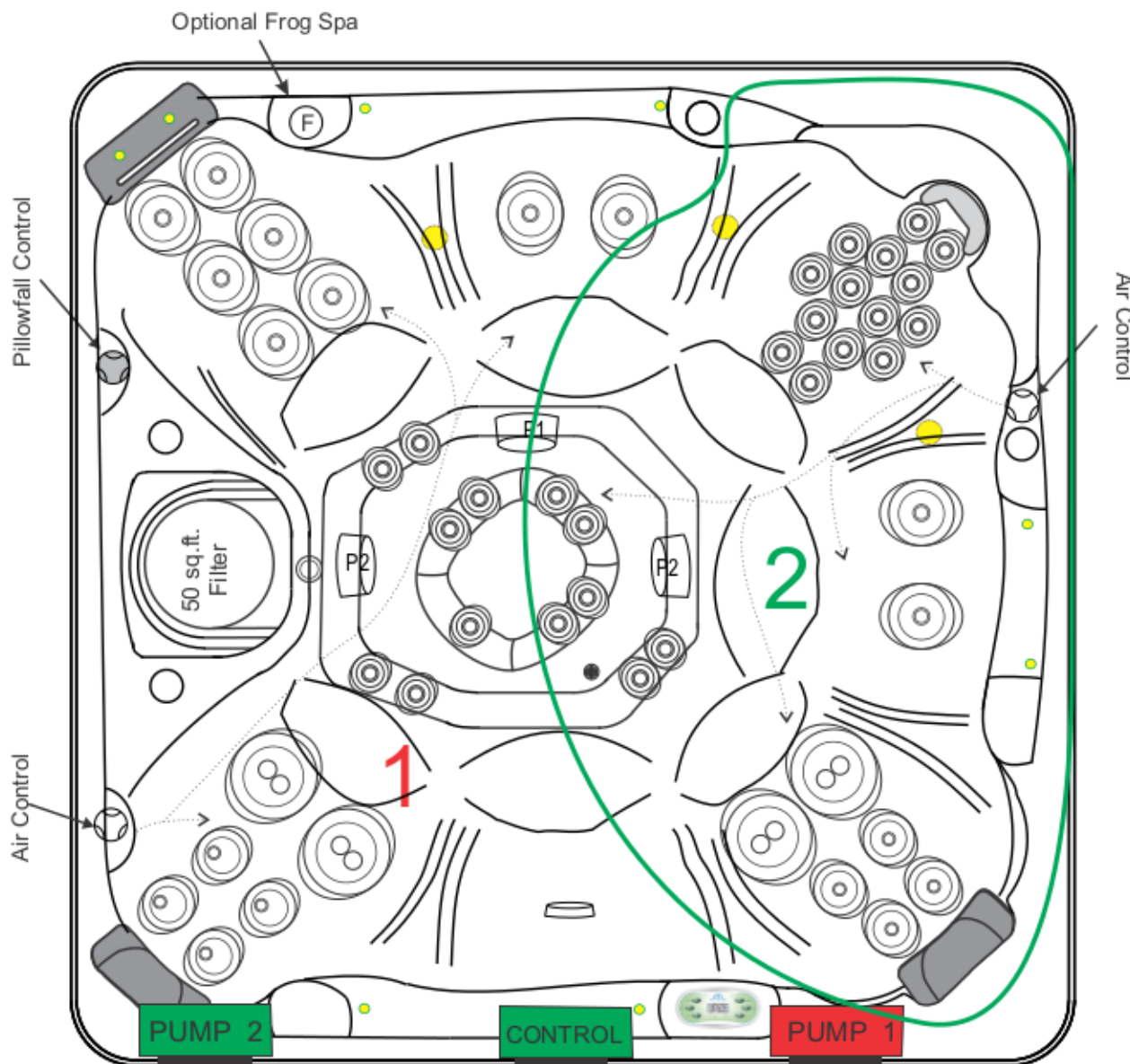











2016 850B Dx 50 JET - 2 Pump



DIMENSIONS	91 in. x 91 in. x 36 in. (231 cm x 231 cm x 91 cm)
TOPSIDE	VL620S (33-0648-08)
CONTROL	MVS504SZ
PUMP 1	4.8 BHP (2.0 HP-50 Hz) 2SPD
PUMP 2	5.0 BHP (3.0 HP-50 Hz) 1SPD
HEATER	5.5 (3.0-50 Hz) kW
SSJETS	STANDARD
SPALIGHT	12 V (3.5 in.)
DYNASTAR LED	STANDARD
KINGWOOD CABINET	STANDARD
ARCTICPAC	STANDARD
PILLOWFALL	STANDARD 11:00 O'CLOCK
OZONE/AOP	OPTIONAL
STEREO	OPTIONAL
RAIL LIGHTING	OPTIONAL
FROG SYSTEM	OPTIONAL

03-1414-52 DOUBLE ROTO 5 in., SS		4
03-1312-52 DIRECT 3.5 in., SS		10
03-1208-52 DIRECT 3 in., SS		4
03-1207-52 ROTO 3 in., SS		4
03-1103-52 DIRECT 2 in., SS		27
03-0023-03 OZONE RETURN JET		1
TOTAL JETS		50
05-0005-48 DRAIN		1

REVISION : 24 AUG 16