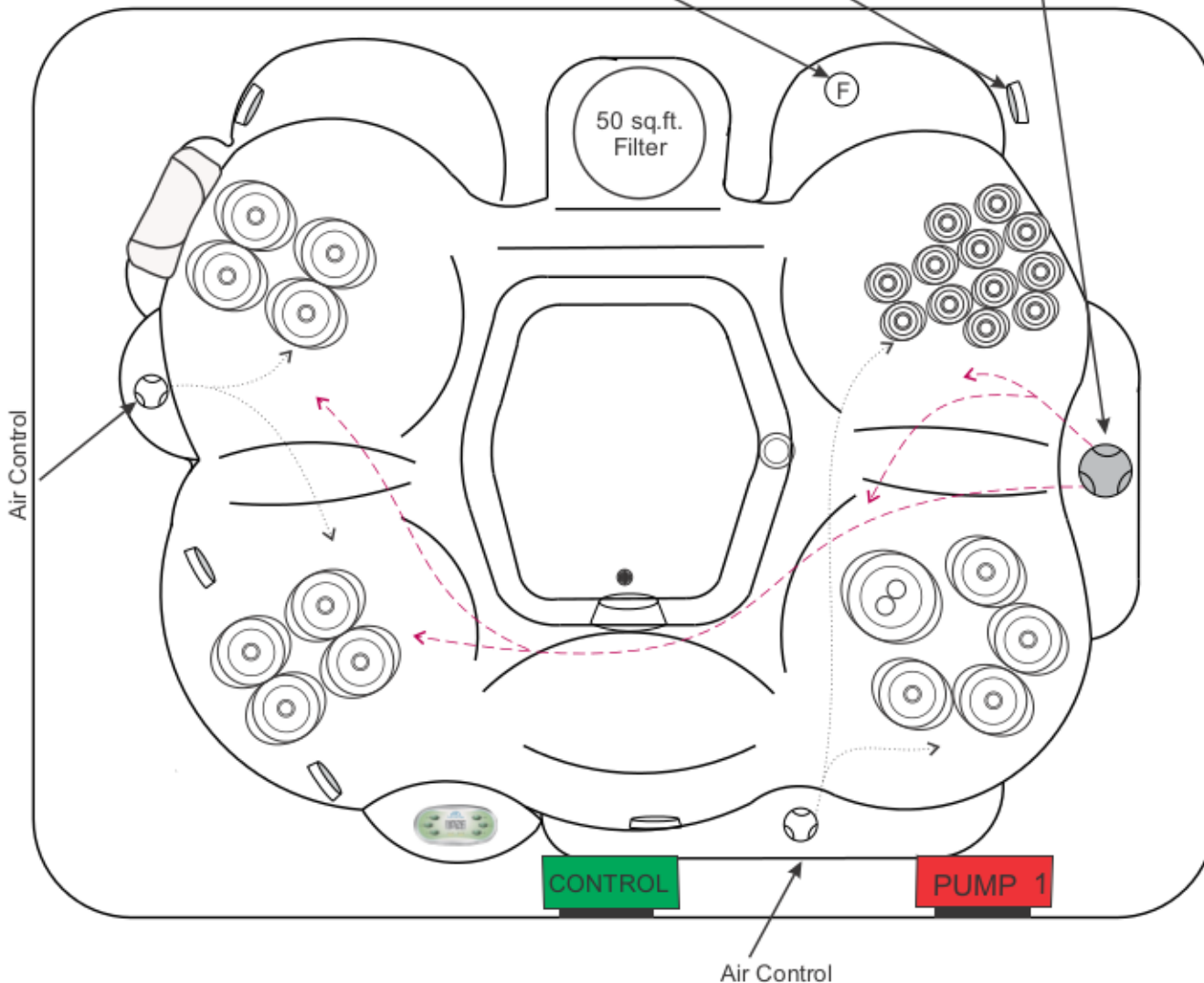




**2016 726D
26 JET - 1 Pump**

DIMENSIONS 84 in. x 68 in. x 36 in. (213 cm x 173 cm x 91 cm)	
TOPSIDE	VL620S (33-0648-08)
CONTROL	MGS504SZ
PUMP 1	4.8 BHP (2.0 HP-50 Hz) 2SPD
HEATER	5.5 (3.0-50 Hz) kW
SS JETS	STANDARD
SPALIGHT	12V (3.5 in.)
KINGWOOD CABINET	STANDARD
OZONE/AOP	OPTIONAL
STEREO	OPTIONAL
DYNASTAR LED	OPTIONAL
PILLOWFALL	OPTIONAL
FROG SYSTEM	OPTIONAL

Optional Frog Spa Optional Speakers Diverter Controls 1 & 5 o'clock
or 7 & 11 o'clock



03-1414-52		1
DOUBLE ROTO 5 in., SS		
03-1312-52		12
DIRECT 4 in., SS		
03-1103-52		12
DIRECT 2 in., SS		
03-0023-03		1
OZONE RETURN JET		
TOTAL JETS		26
05-0005-48		1
DRAIN		

REVISION : 30 MAR 16